

HIRE

SALES

SERVICE

LEASE

FINANCE

## **Heavy Duty Forklifts**

5.0T – 10.0T UN Forklift Diesel N-Series



WA

NT

QLD

NSW

VIC

SA

## ISUZU



### HEAVY DUTY FORKLIFT RANGE



5.0T FORKLIFT



6.0T FORKLIFT



7.0T FORKLIFT



8.0T FORKLIFT



9.0T FORKLIFT



10.0T FORKLIFT

UN Forklift's 5.0T - 10.0T heavy-duty diesel forklift trucks are designed for high performance, maximum efficiency and minimal operating costs. Their robust components allow these forklifts to operate smoothly over rough terrain with excellent manoeuvrability. Market-leading engines from Isuzu ensure superior performance and excellent fuel efficiency.

### KEY FEATURES

#### Reliability & Power

- **6-cylinder Isuzu engine:** low noise, high torque, strong performance
- **Advanced cooling system** with large water tank and exhaust window



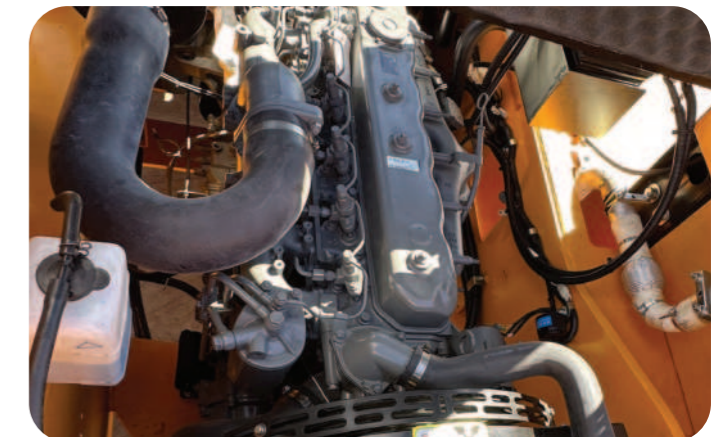
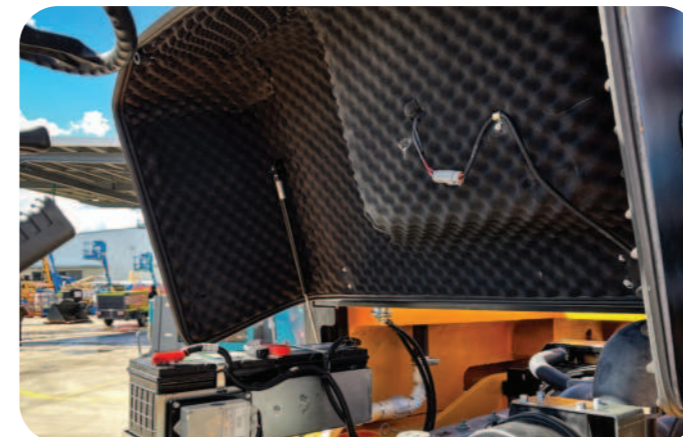
#### Safety & Comfort

- **Wide welded mast** for visibility, efficiency and safety
- **Large anti-skid tyres** for stability
- **Strong axles and wide turning angle** for easy handling
- **Hydraulic brake system** for fast response
- **Rollover protection structure** for operator safety
- **Adjustable seat and steering with a spacious footwell** for maximum comfort
- **Intelligent instrument panel** with key indicators

#### Easy Service & Maintenance

Wide opening engine hood for easy servicing.

Optimal internal layout to improve serviceability.



#### Additional Options Available

Triplex Mast | Solid and Non-marking Tyres | Fork Positioner

HIRE

SALES

SERVICE

LEASE

FINANCE

HIRE

SALES

SERVICE

LEASE

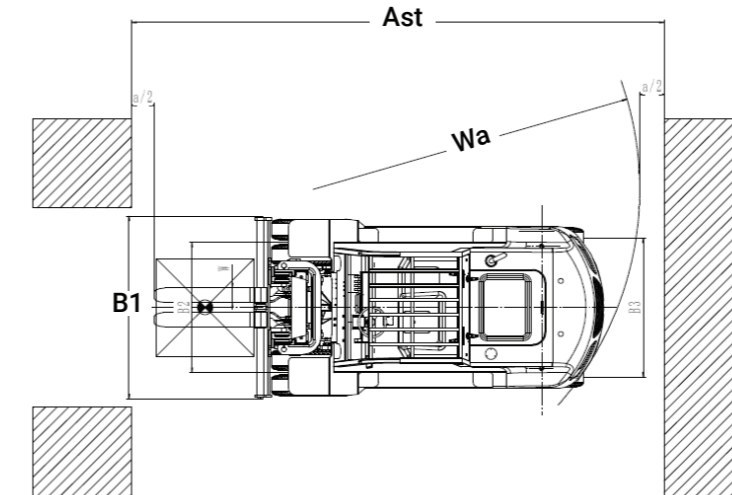
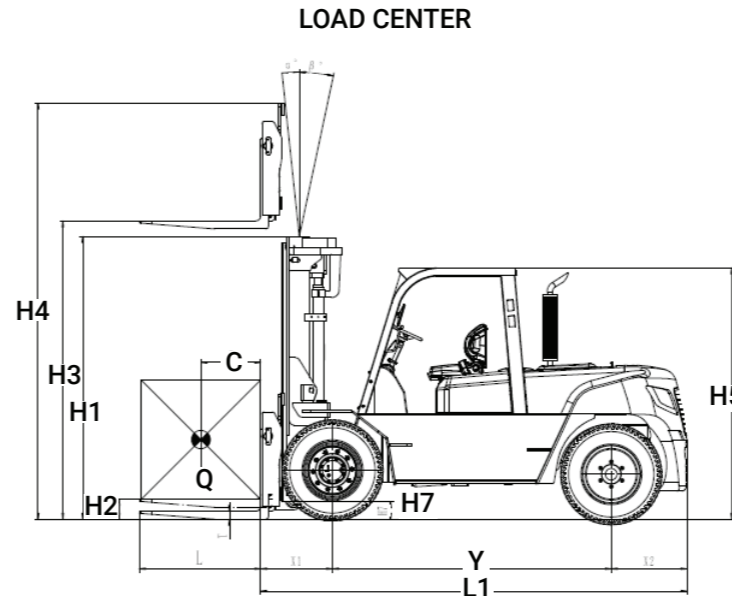
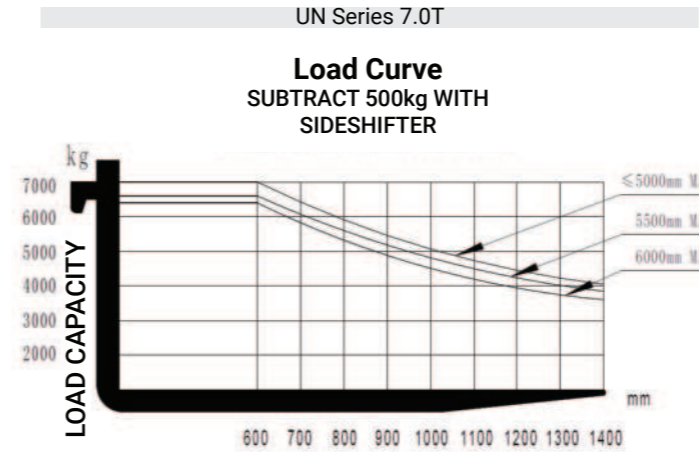
FINANCE

## Diesel Forklift 5.0 - 7.0T

## MAST SPECIFICATIONS & RATED CAPABILITIES

Mast Type	Mast Name	Max Fork Height (mm)	Load Capacity (kg) Load Center 600mm			Overall Height (mm)				Free Lift (mm)				Tilt Angle	Total Weight (kg)				
						Lowered		Extended		Without Backrest		With Backrest							
			5.0t	6.0t	7.0t	5.0t / 6.0t		7.0t		5.0t / 6.0t		7.0t							
			Without Backrest	With Backrest	Without Backrest	With Backrest	Without Backrest	With Backrest	Without Backrest	With Backrest									
2-Stage Wide View Mast	M300	3000	5000	6000	7000	2515	3967	4437	2615	4067	4437	152	152	6-12	7980	8640	9350		
	M330	3300	5000	6000	7000	2665	4267	4737	2765	4367	4737	152	152	6-12	8025	8685	9395		
	M350	3500	5000	6000	7000	2765	4467	4937	2865	4567	4937	152	152	6-12	8055	8715	9425		
	M370	3700	5000	6000	7000	2890	4667	5137	2990	4767	5187	152	152	6-12	8095	8750	9460		
	M400	4000	5000	6000	7000	3065	4967	5437	3165	5067	5437	152	152	6-12	8145	8805	9515		
	M430	4300	5000	6000	7000	3165	5267	5737	3265	5367	5637	152	152	6-12	8175	8835	9545		
	M450	4500	5000	6000	7000	3315	5467	5937	3415	5567	5937	152	152	6-12	8315	8975	9685		
	M470	4700	5000	6000	7000	3440	5667	6137	3540	5767	6187	152	152	6-6	8350	9010	9720		
	M500	5000	5000	6000	7000	3565	5967	6437	3665	6067	6437	152	152	6-6	8390	9050	9760		
	M550	5500	4750	5700	6600	3865	6467	6937	3965	6567	6937	152	152	3-6	8570	9230	9940		
M600	6000	4400	5400	6400	4115	6967	7437	4215	7067	7437	152	152	3-6	8645	9305	10015			
3-Stage Wide View Mast	TFM400	4000	5000	6000	7000	2510	5112	5437	2610	5112	5437	1378	1065	1378	1165	6-6	8540	9200	9895
	TFM430	4300	4500	5600	6500	2625	5412	5737	2725	5412	5737	1494	1180	1494	1280	6-6	8560	9220	9950
	TFM450	4500	4500	5600	6000	2675	5612	5937	2775	5612	5937	1544	1230	1544	1330	6-6	8580	9240	9970
	TFM470	4700	4500	5600	6000	2775	5812	6137	2875	5812	6137	1644	1430	1644	1430	6-6	8625	9285	10015
	TFM500	4500	4500	5600	6000	2840	6112	6437	2940	6112	6437	1708	1395	1708	1495	3-6	8720	9380	10110
	TFM550	5500	4200	5300	6000	3005	6612	6937	3105	6612	6937	1874	1560	1874	1660	3-6	8795	9455	10185
TFM600	6000	4000	5000	6000	3220	7112	7437	3320	7112	7437	2044	1775	2044	1875	3-6	8885	9545	10275	

## MAIN SPECIFICATIONS



General		FD50T-NJB3	FD60T-NJB3	FD70T-NJB3
1	Model			
2	Power Type	Diesel		
3	Rated Load Capacity	Q (kg)	5000	6000
4	Load centre	C (mm)	600	
5	Rated Lift Height	H3 (mm)	3000	
6	Free Lift Height	H2 (mm)	152	
7	Fork Size (L x W x T)	mm	1220x150x60	
8	Mast Tilt Angle (F/R, α° / β°)	deg	6° / 12°	
9	Fork Overhang (Wheel Center to Fork Face)	x1 (mm)	585	
10	Rear Overhang	x2 (mm)	640	720
11	Ground Clearance (Bottom of Mast)	H7 (mm)	200	
12	Length to Face of Fork (without Fork)	L1 (mm)	3510	3590
13	Overall Width	B1 (mm)	1995	
14	Mast Lowered Height	H1 (mm)	2515	2615
15	Mast Extended Height (with Backrest)	H4 (mm)	4437	
16	Overhead Guard Height	H5 (mm)	2415	
17	Turning Radius (Outside)	Wa (mm)	3280	3360
18	Wheelbase	Y (mm)	2250	
19	Front Tread	mm	1470	
20	Rear Tread	mm	1700	
21	Min. Aisle Width for Pallets	Ast (mm)	5285	5365
22	Travel Speed (No Load)	km/h	20	
23	Lifting Speed (Full Load)	mm/sec	500	460
24	Max Gradeability (Full Load)	%	35	32
25	Max. Drawbar Pull (Full Load)	KN	53	52
26	Total Weight	kg	7980	8640
27	Front Axle Weight Distribution (Full Load/No Load)	kg	11660/4010	13050/3880
28	Rear Axle Weight Distribution (Full Load/No Load)	kg	1320/3970	1590/4760
29	Battery	V/Ah	24/90	
30	Engine Model		A-6BG1QC	
31	Engine Manufacturer		ISUZU	
32	Rated Output / r.p.m	kw	82/2000	
33	Rated Torque / r.p.m	N-m	416/1400-1600	
34	No. of Cylinder		6	
35	Bore x Stroke		105x125	
36	Transmission Type		Powershift	
37	Transmission Stage (FWD/RVS)		2/2	
38	Operating Pressure (For Attachments)	Mpa	17	



HIRE

SALES

SERVICE

LEASE

FINANCE

HIRE

SALES

SERVICE

LEASE

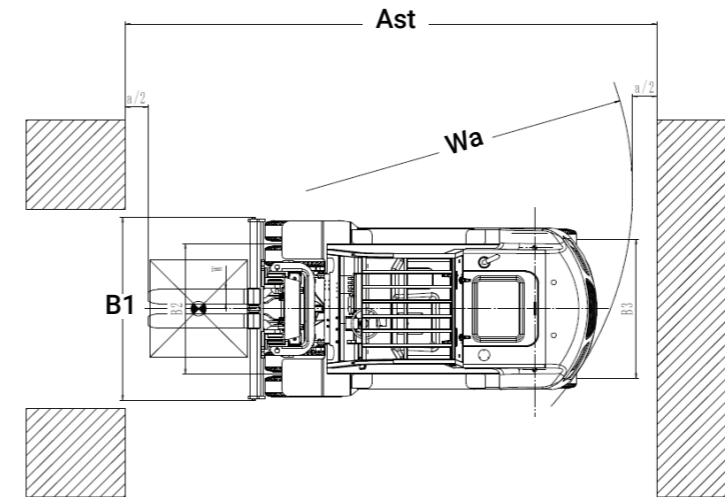
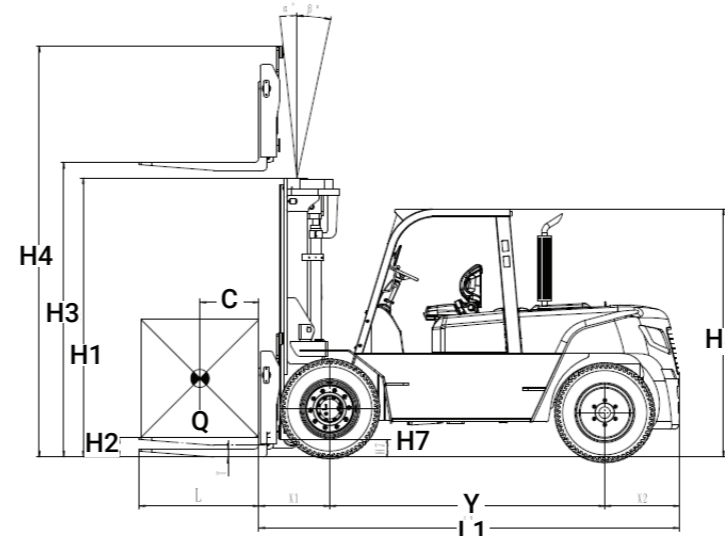
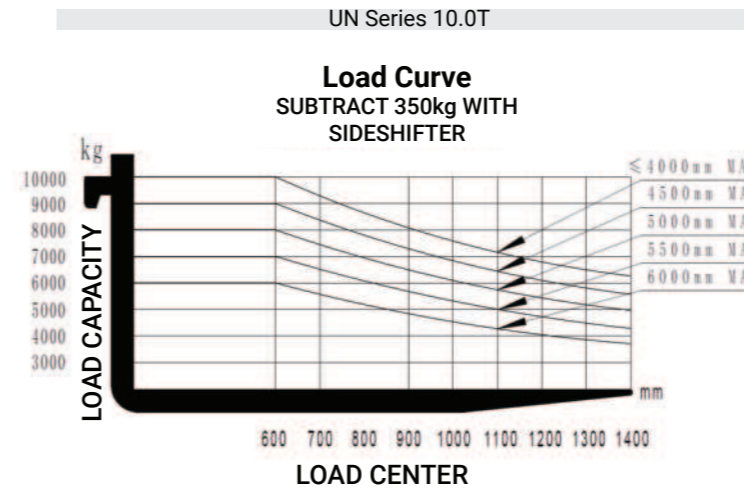
FINANCE

## Diesel Forklift 8.0 - 10.0T

### MAST SPECIFICATIONS & RATED CAPABILITIES

Mast Type	Mast Name	Max Fork Height (mm)	Load Capacity (kg) Load Center 600mm	Overall Height (mm)		Free Lift (mm)	Tilt Angle (F/R)	Total Weight (kg)
				Lowered	Extended			
<b>8.0t</b>	<b>8.0t</b>	<b>8.0t</b>	<b>8.0t</b>	<b>8.0t</b>		<b>8.0t</b>	<b>8.0t</b>	<b>8.0t</b>
2-Stage Wide View Mast	M350	3500	8000	2945	4630	120	6-12	11945
	M400	4000	8000	3245	5180	120	6-12	12190
	M450	4500	8000	3495	5680	120	6-12	12280
<b>10.0t</b>	<b>10.0t</b>	<b>10.0t</b>	<b>10.0t</b>	<b>10.0t</b>		<b>10.0t</b>	<b>10.0t</b>	<b>10.0t</b>
2-Stage Wide View Mast	M250	2500	10000	1595	3785	140	6-12	12805
	M300	3000		2845	4285	140	6-12	12900
	M330	3300		2995	4585	140	6-12	12955
	M350	3500		3095	4785	140	6-12	12995
	M400	4000		3395	5320	140	6-12	13240
	M450	4500		3645	5820	140	6-6	13330
	M470	4700		3770	6070	140	6-6	13380
	M500	5000		3895	6320	140	6-6	13425
	M550	5500		4195	6870	140	3-6	13670
	M600	6000		4445	7370	140	3-6	13765
3-Stage Wide View Mast	TFM400	4000	8000	2695	5335	1325	6-12	13545
	TFM430	4300	8000	2815	5695	1445	6-12	13610
	TFM450	4500	7800	2865	5845	1495	6-12	13650
	TFM470	4700	7500	2965	6145	1595	6-6	13710
	TFM500	5000	7500	3030	6340	1660	6-6	13735
	TFM550	5500	7000	3220	6760	1850	3-6	13860
TFM600	6000	6000	3420	7360	2050	3-6	14115	

### MAIN SPECIFICATIONS



General		FD80T-NJB3	FD100T-NJB3
1	Model	FD80T-NJB3	FD100T-NJB3
2	Power Type	Diesel	
3	Rated Load Capacity	Q (kg)	8000   10000
4	Load centre	C (mm)	600
5	Rated Lift Height	H3 (mm)	3000
6	Free Lift Height	H2 (mm)	120
7	Fork Size (L x W x T)	mm	1220x175x75   1220x175x80
8	Mast Tilt Angle (F/R, α° / β°)	deg	6° / 12°
9	Fork Overhang (Wheel Center to Fork Face)	x1 (mm)	721
10	Rear Overhang	x2 (mm)	760
11	Ground Clearance (Bottom of Mast)	H7 (mm)	250
12	Length to Face of Fork (without Fork)	L1 (mm)	4040   4270
13	Overall Width	B1 (mm)	2165
14	Mast Lowered Height	H1 (mm)	2695   2845
15	Mast Extended Height (with Backrest)	H4 (mm)	4020   4260
16	Side Shift	X (mm)	340-2000   440-2140
17	Overhead Guard Height	H5 (mm)	2520   2540
18	Wheelbase	Y (mm)	2500   2800
19	Turning Radius (Outside)	Wa (mm)	3700   3900
20	Min. Aisle Width for Pallets	Ast (mm)	5845   6045
Performance			
21	Travel Speed (No Load)	km/h	20
22	Lifting Speed (No Load)	mm/sec	380   310
23	Lowering Speed (Full Load)	mm/sec	480   500
24	Max Drawbar Pull (Full Load)	KN	58   57
25	Max. Gradeability (Full Load)	%	≤20
Weight			
26	Total Weight	kg	11850   12900
27	Front Axle Weight Distribution (Full Load/No Load)	kg	17800/4740   20610/5660
28	Rear Axle Weight Distribution (Full Load/No Load)	kg	2050/7110   2290/8240
Power & Transmission			
29	Battery	V/Ah	24/90
30	Engine Model		A-6BG1QC
31	Engine Manufacturer		ISUZU
32	Rated Output / r.p.m	kw	82/2000
33	Rated Torque / r.p.m	N-m	416/1400-1600
34	No. of Cylinder		6
35	Bore x Stroke		105x125
36	Transmission Type		Powershift
37	Transmission Stage (FWD/RVS)		2/2
38	Operating Pressure (For Attachments)	Mpa	17



# **FORKLIFTS** **AUSTRALIA**

HIRE

SALES

SERVICE

LEASE

FINANCE



## **OUR DIFFERENCE**

### **EXTENSIVE RANGE**

We stock equipment from world-leading brands such as UN Forklift, Kalmar, JCB, Manitou, Merlo, Hyster, JLG and more.

### **20+ YEARS EXPERIENCE**

Our team has extensive industry experience so you can be assured you will receive great advice and exceptional service.

### **COMPLETE SOLUTION**

From equipment hire, sales and service, through to transport, we can deliver a complete solution for your project.

## **OUR LOCATIONS**

### **WESTERN AUSTRALIA**

*Perth  
Kalgoorlie  
Karratha  
Port Hedland  
Newman*

### **QUEENSLAND**

*Brisbane*

### **SOUTH AUSTRALIA**

*Adelaide*

### **VICTORIA**

*Melbourne*

### **NORTHERN TERRITORY**

*Darwin*

### **NEW SOUTH WALES**

*Sydney  
Newcastle*

FA-BRO-EQC-V2-0725

WA

NT

QLD

NSW

VIC

SA